

NOTHING TO TALK ABOUT SO LET'S TALK ABOUT WEAPONS!



DIVERSE DESIGN OF DAO BIAO'S OWN OF WEAPONS, CURRENTLY DEVELOPING FROM MORE FUTURE SET TO SEE IT MEET BUREAU.

IN FUTURE, THE AUTHOR WILL MENTARY FINDER FOCUS TRAILERS!



IN REGARDS TO WEAPONS APPEARING IN THE MANGA, THEY WERE DESIGN AFTER TAKING INTO THAT EX-GRANDER AS BLUEPRINTS!

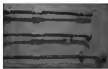


TUBULAR POWELL POSSESS A STRONG CHARACTER'S STYLE, VERY SIMILAR TO DAO BIAO'S UNFINISHED PERSONALITY, MORE WEAPON ACTIVITY IN FUTURE.

1. YOU CHUI DA DAO (TUBULAR POWELL SWORD)

BACKGROUND OF THE INCIDENTS ERA, IT MIGHT BEEN STATED CLEARLY SINCE THE FIRST CHAPTER TELL MORE BECAUSE REGARDLESS OF THE ERA, THEY ARE SIMILAR, IT'S BETTER TO KEEP IT VAGUE. HOWEVER, THOSE WHO HAVE READ "BLADES OF THE GUARDIAN CHAPTER 17" ON THE INTERNET WOULD KNOW, THIS STORY TAKES PLACE DURING THE SUI DYNASTY. THEREFORE, THE WEAPONS, WHICH APPEAR IN THIS MANGA, ARE PORTRAYED WITH REFERENCE TO THE SUI DYNASTY SYSTEM.

YET THE MORE INTERESTING ONE AMONG THE WEAPONS FROM SUI DYNASTY, IS THIS LONG SWORD THAT DAO BIAO LOVES TO USE, THE TUBULAR POWELL.



AUTHOR OBVIOUSLY DID NOT KNOW OF THIS SWORD'S EXISTENCE, BUT CAME TO FIND OUT ABOUT SUCH A COOL SWORD THROUGH ANCIENT WEAPONS EXPERT, WHO HAS GREATS, DIRECTION AND INFORMATION PROVIDED. AND HAN GENG SPECULATES THAT THIS SWORD ORIGINATES FROM THE AREA OF WEST ASIA AND CAUCASUS, PASSED THROUGH HONGKONG AND CHINA'S NORTHERN AREA, ARRIVED IN THE KOREAN PENINSULA BEFORE ENTERING JAPAN.

EXPRESSION MY GRATITUDE ONCE AGAIN TO MR HAN GENG.



AND HE FOUND OUT THAT A SWORD WAS CONSIDERED SUPPLY OF WEAPONRY FOR THE OFFICERS OF A MILITARY COMMAND, MOREOVER A SWORD SAVED

2. HUAN SHOU PAO (RING Pommel sword)

HUAN SHOU PAO IS THE STANDARD SWORD SWORD FOR THE DYNASTY OFFICIALS, IT IS SAID THAT THE SWORD WAS MAINLY USED AGAINST THE PEOPLE. HUAN SHOU PAO IS NOT CONSIDERED THE WEAPON IS THE KING AT THE END OF THE SWORD, NO PATTERN AND MARK, COMPARED TO THE COMPASS, A CLASSIC SWORD FROM DROPPED DOWN FROM THE HAN DYNASTY.

IT WAS ALSO USED AS A MILITARY SWORD DURING THE THREE KINGDOMS OF KOREA, AFTER WHICH THROUGH SIKKIM, IT ENTERED JAPAN DURING THE NINTH CENTURY, KNOWN AS "YUKUJI NO TONDI".

AS CAN BE SEEN IT WAS AN OFFICIAL SWORD, AND WE COULD SAY THAT THE IDENTITY OF ITS OWNER WAS NOT THAT SIMPLE AT ALL.



WORLD CHAMPION'S SWORD, APPARENTLY IT IS SO HEAVY SHOULD BE, BUT COMPARED TO THE ONE ABOVE THE BLADE IS MUCH LONGER.



HISTORICAL INFORMATION OF HUAN SHOU PAO, AKA "RING Pommel" BY WU YAN, JIAN



3. DIE XIE SEVEN DUTIES

DIE XIE BELT IS A COMMON BELT USED BY MEN OF QING DYNASTY, EQUIPPED WITH MICROSPICERS TO SURVIVE BY THE SCOUTS/PIERS, THEREFORE KNOWN AS SEVEN DUTIES. THEREFORE, QAO MA AND THE DEAD ESCORT TEAM WHO SPEND YEARS ON THE BACK, NATURALLY HAVE A SET OF DIE XIE BELT!

CURRENTLY HISTORICAL MOVIES AND TV DRAMAS IN CHINA HAVE A STRICT ORIGINAL BELTORY



EVERY RESEARCH RESPONSE AND COMMENT, IS THE AUTHOR'S AUTHORITY AND VITALITY, SO SHE'LL NEED WRITE!

ALTHOUGH I HOPELY LEAD TO TELL YOU MORE ABOUT HISTORY AND CULTURE, BUT I'M TIRED ON TODAY, I HAVE TO CONTINUE WITH THE SCRIPT...

